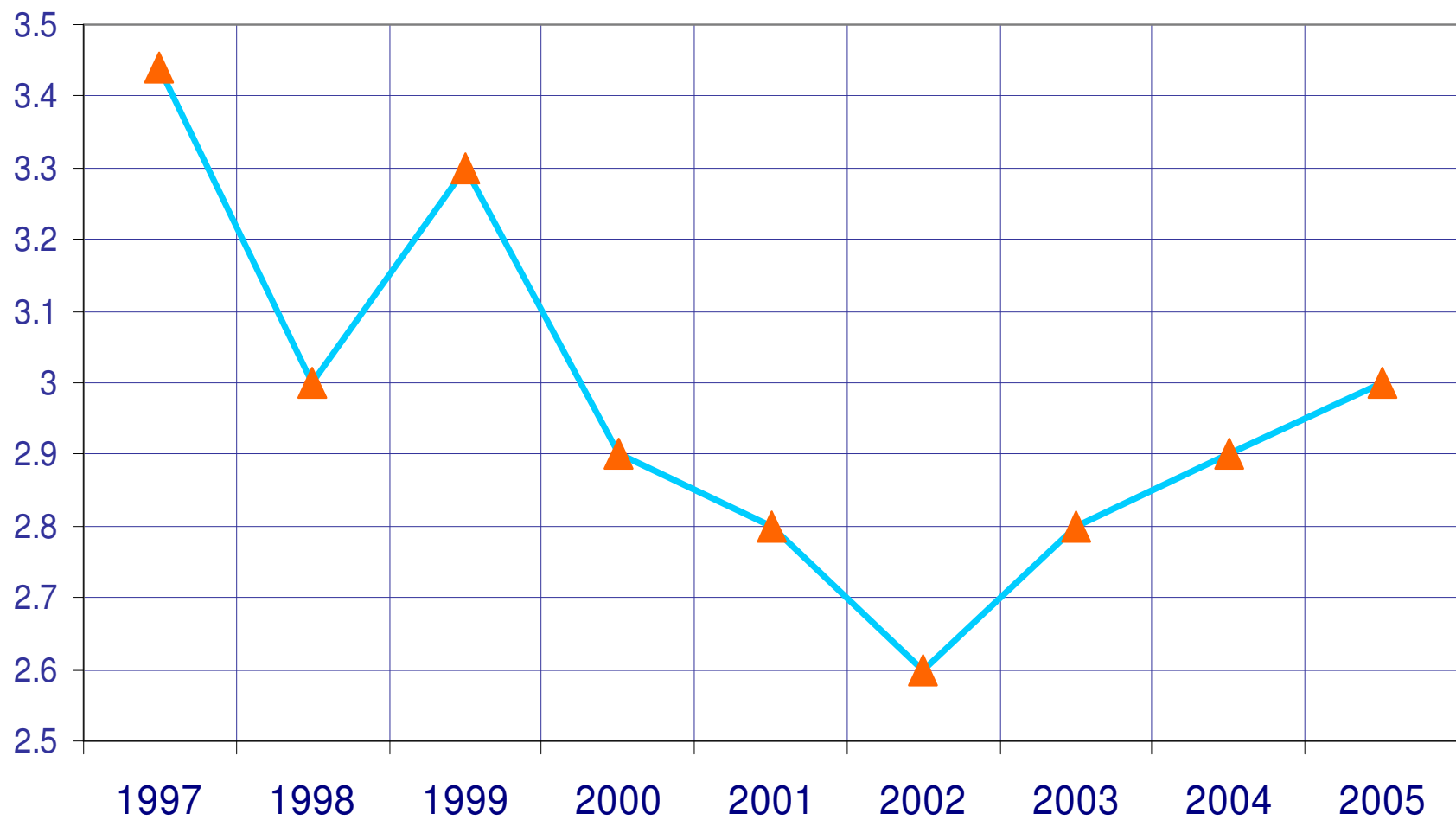


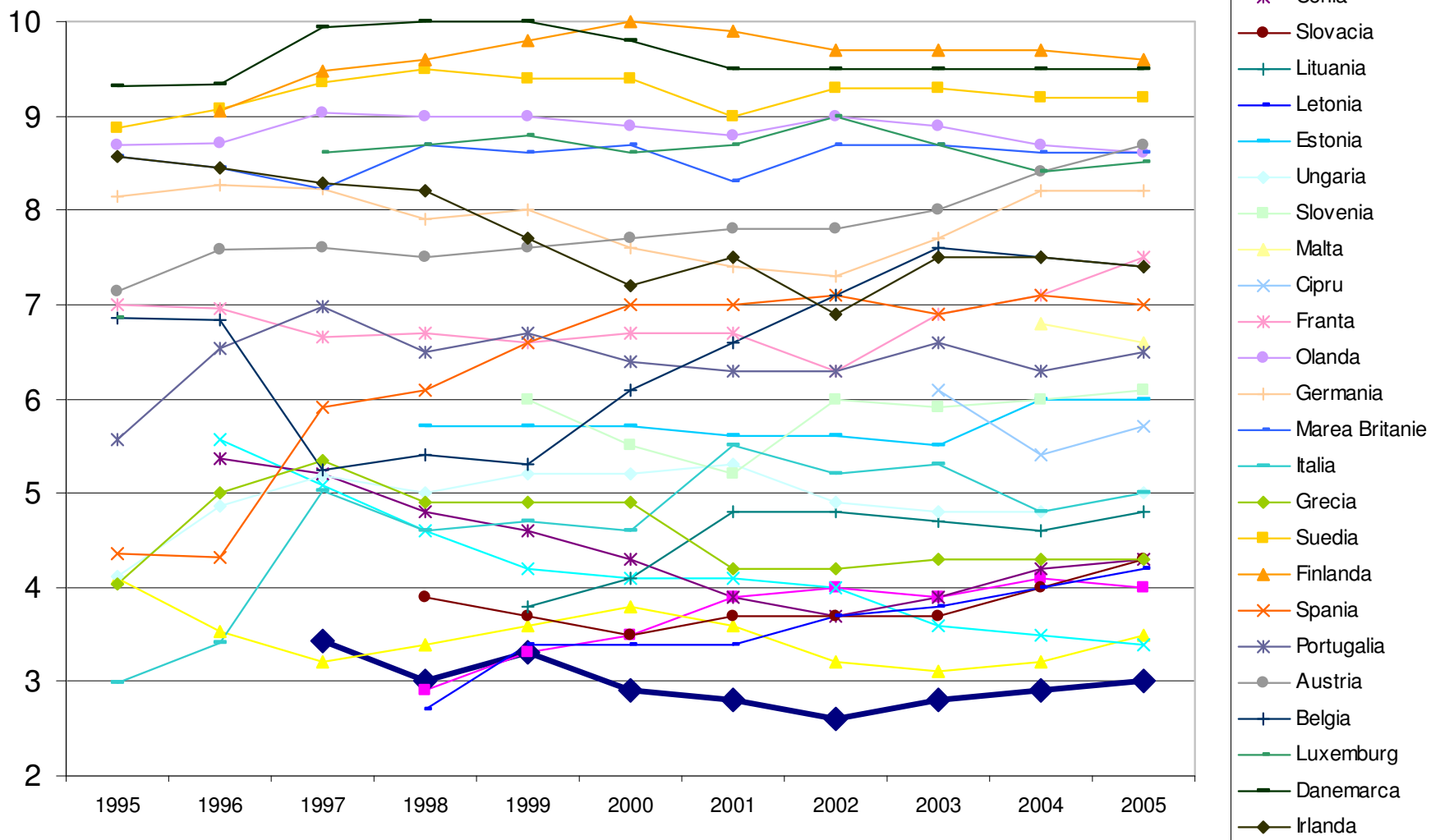
Indicele de Percepție a Corupției: Evoluția țărilor europene 1995-2005

	1995	1996	1997	1998	1999	2000	2001	2002	2003	2004	2005
ROMANIA	-	-	3.44	3.00	3.30	2.90	2.80	2.60	2.80	2.90	3.00
Bulgaria	-	-	-	2.90	3.30	3.50	3.90	4.00	3.90	4.10	4.00
Turcia	4.10	3.54	3.21	3.40	3.60	3.80	3.60	3.20	3.10	3.20	3.50
Polonia	-	5.57	5.08	4.60	4.20	4.10	4.10	4.00	3.60	3.50	3.40
Cehia	-	5.37	5.20	4.80	4.60	4.30	3.90	3.70	3.90	4.20	4.30
Slovacia	-	-	-	3.90	3.70	3.50	3.70	3.70	3.70	4.00	4.30
Lituania	-	-	-	-	3.80	4.10	4.80	4.80	4.70	4.60	4.80
Letonia	-	-	-	2.70	3.40	3.40	3.40	3.70	3.80	4.00	4.20
Estonia	-	-	-	5.70	5.70	5.70	5.60	5.60	5.50	6.00	6.00
Ungaria	4.12	4.86	5.18	5.00	5.20	5.20	5.30	4.90	4.80	4.80	5.00
Slovenia	-	-	-	-	6.00	5.50	5.20	6.00	5.90	6.00	6.10
Malta	-	-	-	-	-	-	-	-	-	6.80	6.60
Cipru	-	-	-	-	-	-	-	-	6.10	5.40	5.70
Medii 10 state noi	4.12	5.27	5.15	4.45	4.58	4.48	4.50	4.55	4.67	4.93	5.04
Franta	7.00	6.96	6.66	6.70	6.60	6.70	6.70	6.30	6.90	7.10	7.50
Olanda	8.69	8.71	9.03	9.00	9.00	8.90	8.80	9.00	8.90	8.70	8.60
Germania	8.14	8.27	8.23	7.90	8.00	7.60	7.40	7.30	7.70	8.20	8.20
Marea Britanie	8.57	8.44	8.22	8.70	8.60	8.70	8.30	8.70	8.70	8.60	8.60
Italia	2.99	3.42	5.03	4.60	4.70	4.60	5.50	5.20	5.30	4.80	5.00
Grecia	4.04	5.01	5.35	4.90	4.90	4.90	4.20	4.20	4.30	4.30	4.30
Suedia	8.87	9.08	9.35	9.50	9.40	9.40	9.00	9.30	9.30	9.20	9.20
Finlanda	-	9.05	9.48	9.60	9.80	10.00	9.90	9.70	9.70	9.70	9.60
Spania	4.35	4.31	5.90	6.10	6.60	7.00	7.00	7.10	6.90	7.10	7.00
Portugalia	5.56	6.53	6.97	6.50	6.70	6.40	6.30	6.30	6.60	6.30	6.50
Austria	7.13	7.59	7.61	7.50	7.60	7.70	7.80	7.80	8.00	8.40	8.70
Belgia	6.85	6.84	5.25	5.40	5.30	6.10	6.60	7.10	7.60	7.50	7.40
Luxemburg	6.85	-	8.61	8.70	8.80	8.60	8.70	9.00	8.70	8.40	8.50
Danemarca	9.32	9.33	9.94	10.00	10.00	9.80	9.50	9.50	9.50	9.50	9.50
Irlanda	8.57	8.45	8.28	8.20	7.70	7.20	7.50	6.90	7.50	7.50	7.40
Media State vechi UE	7.05	7.40	7.70	7.68	7.69	7.69	7.64	7.67	7.81	7.78	7.73
Media UE	6.74	6.93	7.19	6.67	6.53	6.50	6.49	6.51	6.57	6.58	6.66

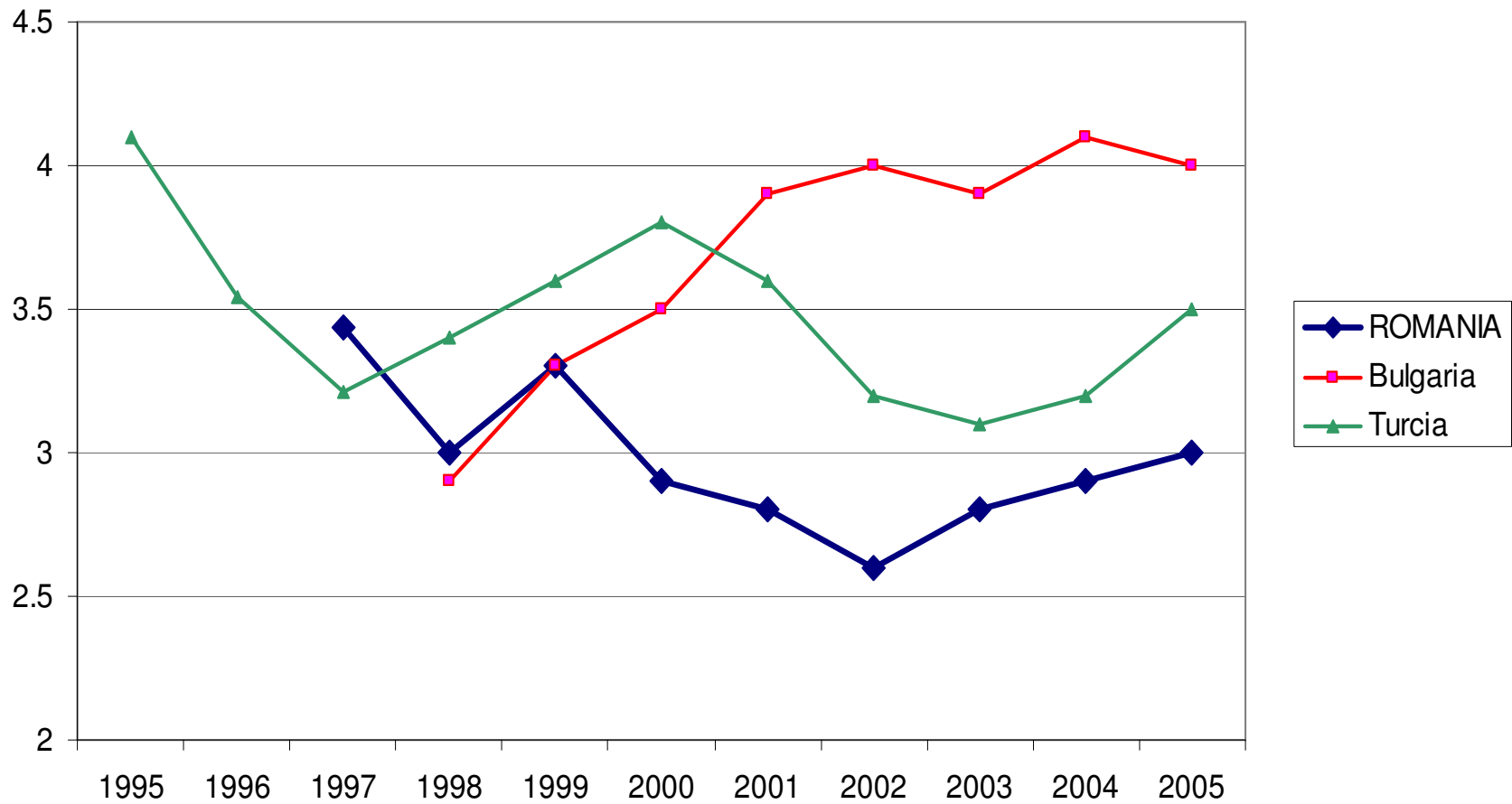
Evoluția României în perioada 1997-2005



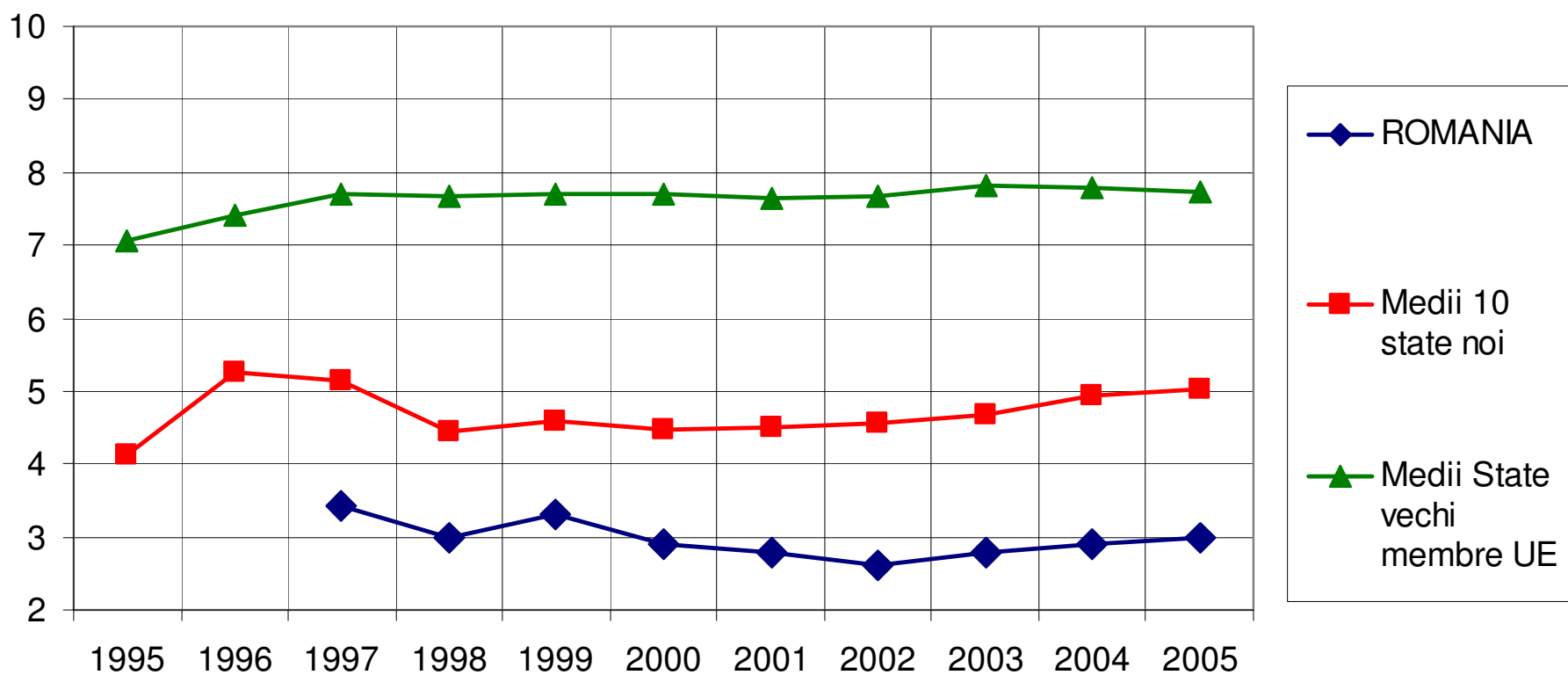
Indicele de Percepție a Corupției: Evoluția țărilor europene 1995-2005



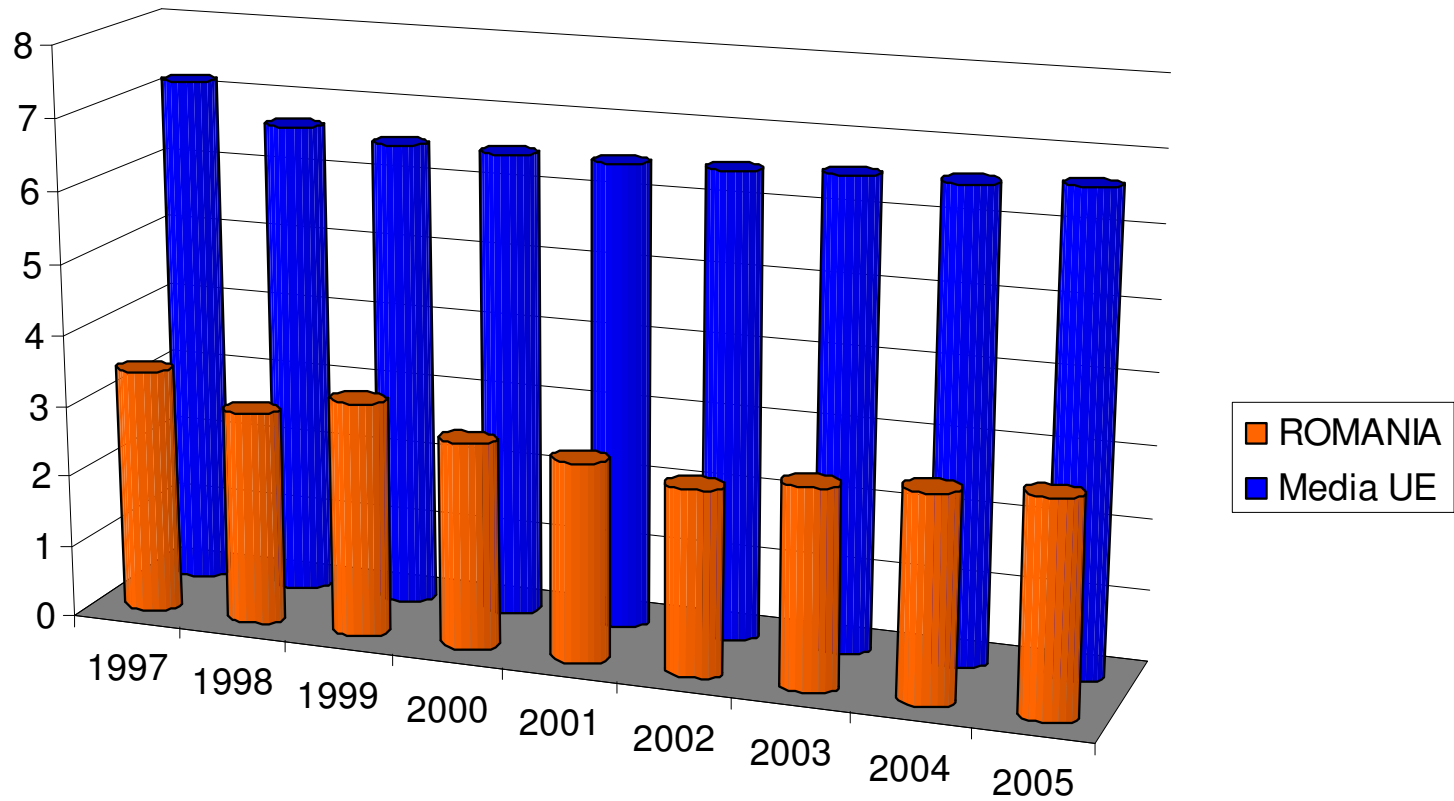
IPC 2005: Țările candidate la aderare în UE



IPC 2005: România vs. media vechilor țări UE și media statelor nou aderate



IPC 2005: România vs. media Uniunii Europene (toate statele)



	1997	1998	1999	2000	2001	2002	2003	2004	2005
ROMÂNIA	3.44	3.0	3.3	2.9	2.8	2.6	2.8	2.9	3.0
Media UE	7.19	6.67	6.53	6.5	6.49	6.51	6.57	6.58	6.66