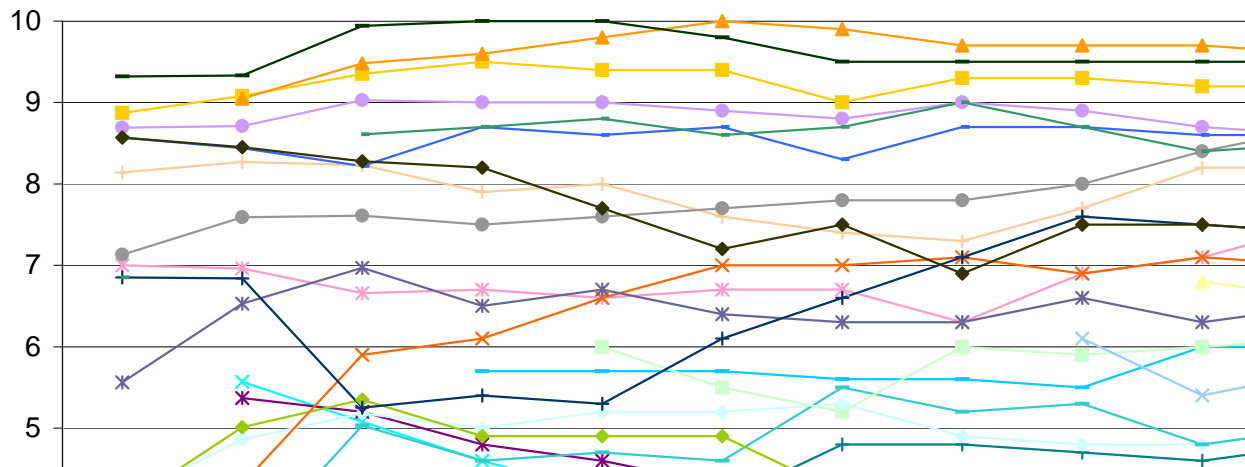
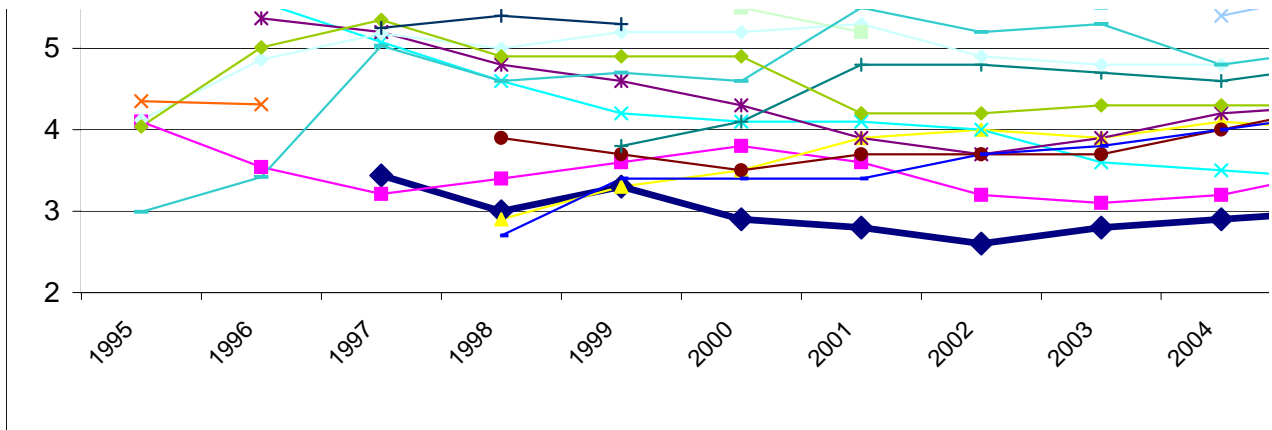


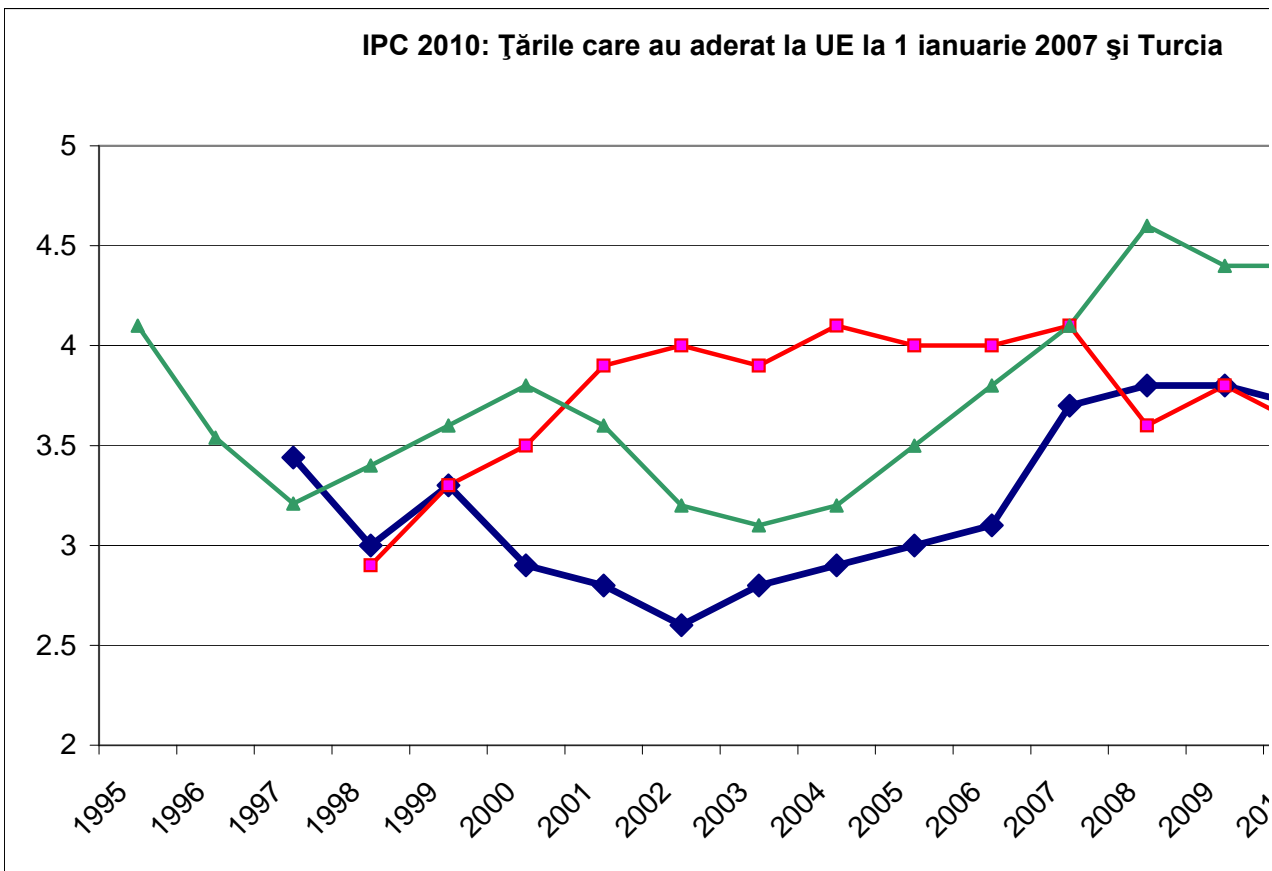
	1995	1996	1997	1998	1999	2000	2001	2002
ROMANIA			3.44	3	3.3	2.9	2.8	2.6
Turcia	4.1	3.54	3.21	3.4	3.6	3.8	3.6	3.2
Bulgaria				2.9	3.3	3.5	3.9	4
Polonia		5.57	5.08	4.6	4.2	4.1	4.1	4
Cehia		5.37	5.2	4.8	4.6	4.3	3.9	3.7
Slovacia				3.9	3.7	3.5	3.7	3.7
Lituania					3.8	4.1	4.8	4.8
Letonia				2.7	3.4	3.4	3.4	3.7
Estonia				5.7	5.7	5.7	5.6	5.6
Ungaria	4.12	4.86	5.18	5	5.2	5.2	5.3	4.9
Slovenia					6	5.5	5.2	6
Malta								
Cipru								
Franta	7	6.96	6.66	6.7	6.6	6.7	6.7	6.3
Olanda	8.69	8.71	9.03	9	9	8.9	8.8	9
Germania	8.14	8.27	8.23	7.9	8	7.6	7.4	7.3
Marea Britanie	8.57	8.44	8.22	8.7	8.6	8.7	8.3	8.7
Italia	2.99	3.42	5.03	4.6	4.7	4.6	5.5	5.2
Grecia	4.04	5.01	5.35	4.9	4.9	4.9	4.2	4.2
Suedia	8.87	9.08	9.35	9.5	9.4	9.4	9	9.3
Finlanda		9.05	9.48	9.6	9.8	10	9.9	9.7
Spania	4.35	4.31	5.9	6.1	6.6	7	7	7.1
Portugalia	5.56	6.53	6.97	6.5	6.7	6.4	6.3	6.3
Austria	7.13	7.59	7.61	7.5	7.6	7.7	7.8	7.8
Belgia	6.85	6.84	5.25	5.4	5.3	6.1	6.6	7.1
Luxemburg	6.85		8.61	8.7	8.8	8.6	8.7	9
Danemarca	9.32	9.33	9.94	10	10	9.8	9.5	9.5
Irlanda	8.57	8.45	8.28	8.2	7.7	7.2	7.5	6.9

Indicele de Percepție a Corupției: Evoluția țărilor europene 1995-2010





	1995	1996	1997	1998	1999	2000	2001	2002
ROMANIA			3.44	3	3.3	2.9	2.8	2.6
Bulgaria				2.9	3.3	3.5	3.9	4
Turcia	4.1	3.54	3.21	3.4	3.6	3.8	3.6	3.2

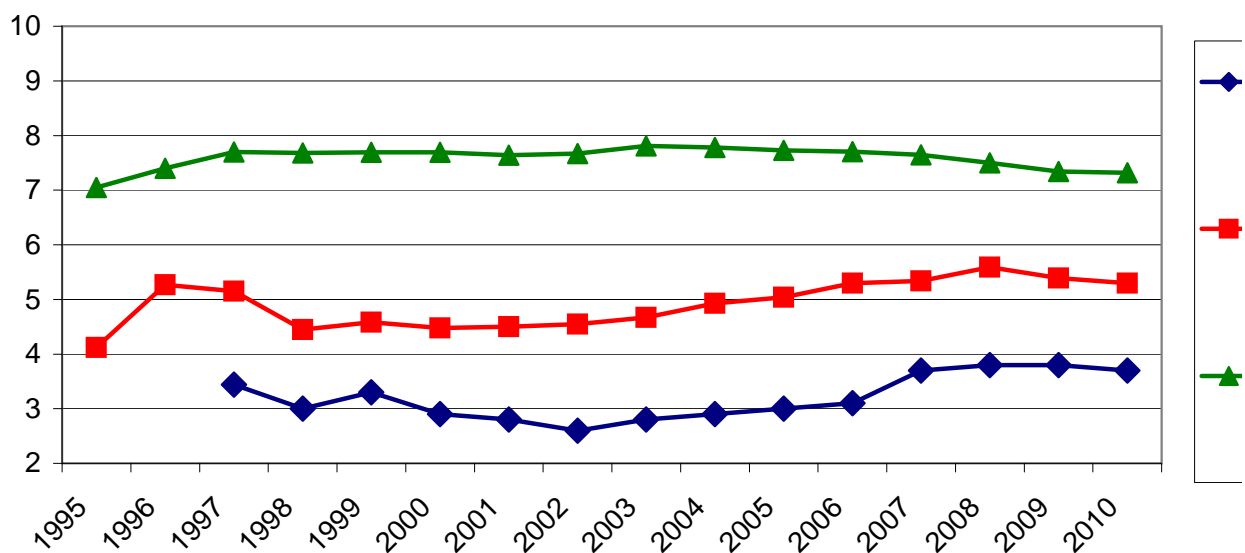


	1995	1996	1997	1998	1999	2000	2001	2002
ROMANIA			3.44	3	3.3	2.9	2.8	2.6
Medii 10 state noi	4.12	5.27	5.15	4.45	4.58	4.48	4.5	4.55

Medii State
vechi
membre
UE

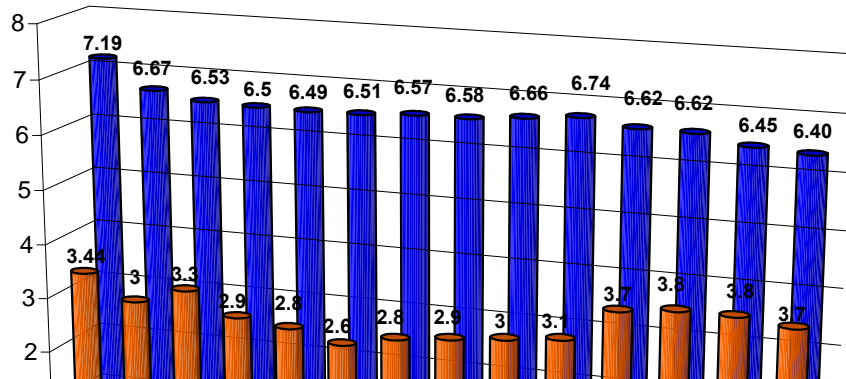
7.05 7.4 7.7 7.68 7.69 7.69 7.64 7.67

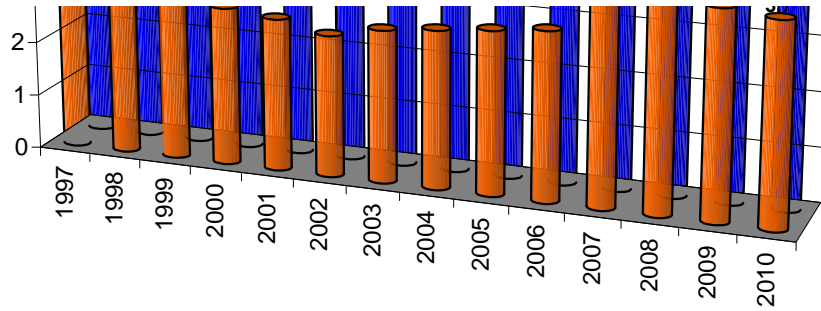
IPC 2010: România vs. media vechilor țări UE media statelor nou aderate



	1997	1998	1999	2000	2001	2002	2003	2004
ROMANIA	3.44	3	3.3	2.9	2.8	2.6	2.8	2.9
Media UE	7.19	6.67	6.53	6.5	6.49	6.51	6.57	6.58

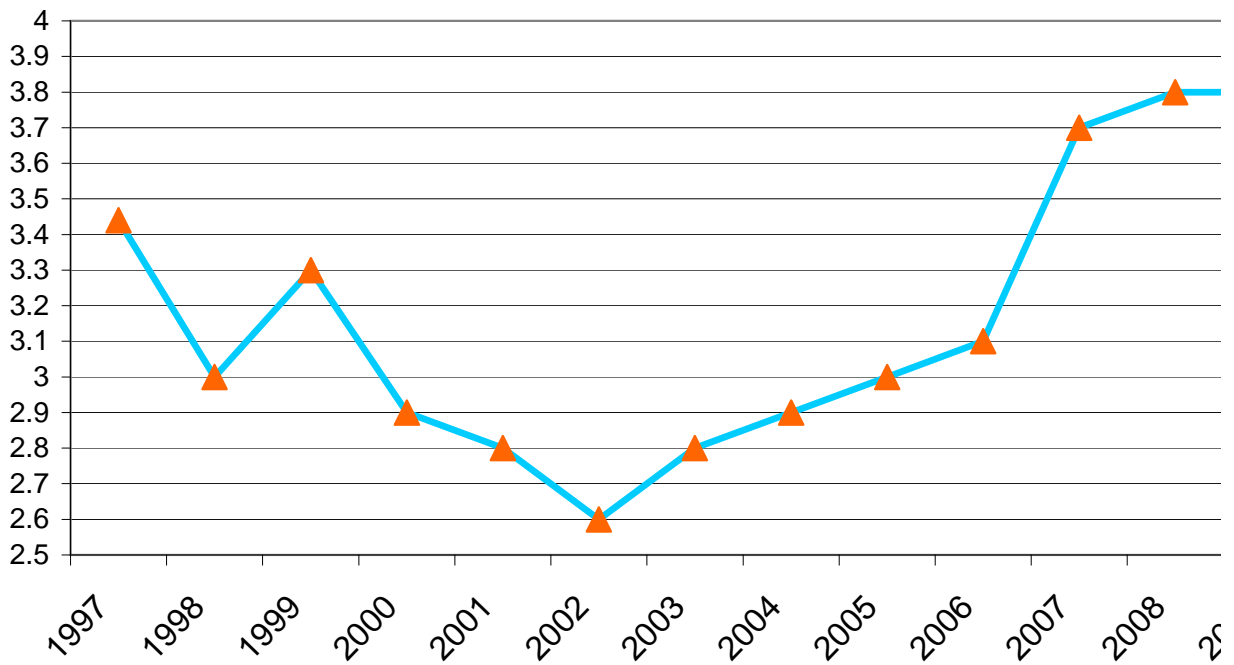
IPC 2010: România vs. media Uniunii Europene (celelalte state)





	1997	1998	1999	2000	2001	2002	2003	2004
ROMANIA	3.44	3	3.3	2.9	2.8	2.6	2.8	2.9
IA								

Evoluția României în perioada 1997-2010



	2008	2009	2010
ROMANIA	3.8	3.8	3.7
Bulgaria	3.6	3.8	3.6
Turcia	4.6	4.4	4.4

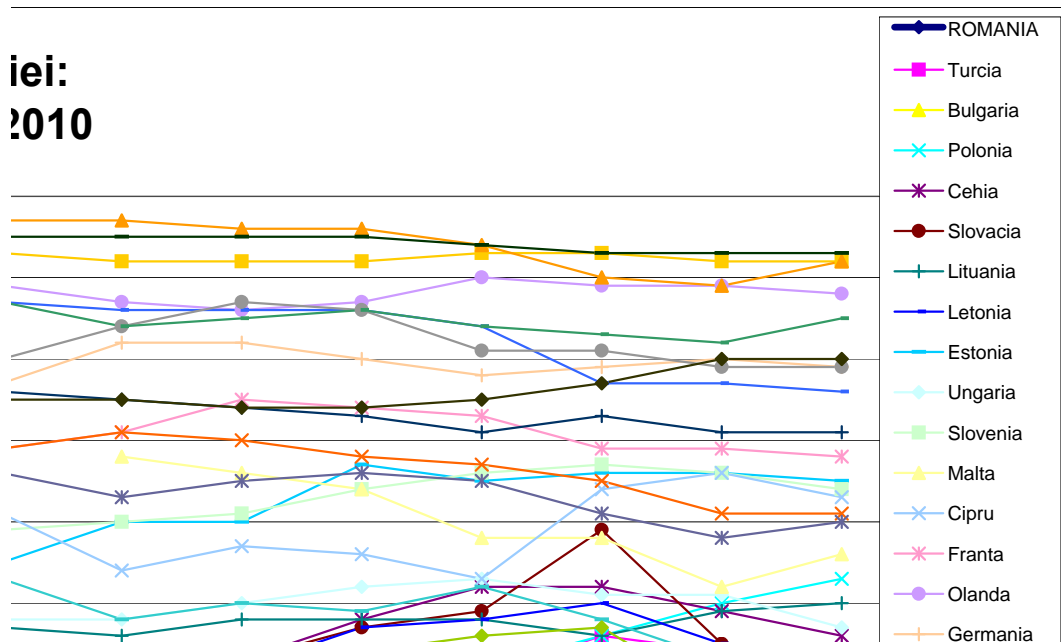
	cresc	
	2009	2010
ROMANIA	-	-
Bulgaria	-	-
Turcia	-	-

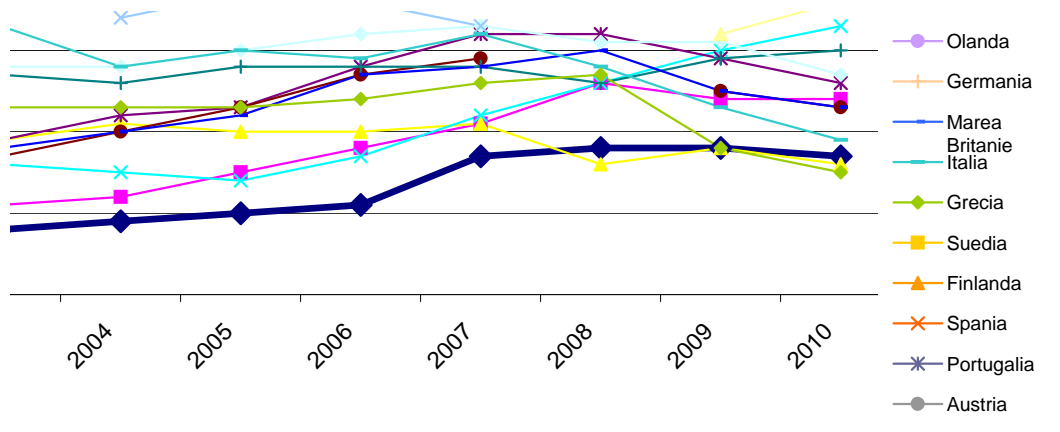
Polonia	4.6	5	5.3
Cehia	5.2	4.9	4.6
Slovacia	5.9	4.5	4.3
Lituania	4.6	4.9	5
Letonia	5	4.5	4.3
Estonia	6.6	6.6	6.5
Ungaria	5.1	5.1	4.7
Slovenia	6.7	6.6	6.4
Malta	5.8	5.2	5.6
Cipru	6.4	6.6	6.3
Franta	6.9	6.9	6.8
Olanda	8.9	8.9	8.8
Germania	7.9		7.9
		8	
Marea Britanie	7.7		7.6
		7.7	
Italia	4.8	4.3	3.9
Grecia	4.7	3.8	3.5
Suedia	9.3	9.2	9.2
Finlanda	9	8.9	9.2
Spania	6.5	6.1	6.1
Portugalia	6.1		6
		5.8	
Austria	8.1	7.9	7.9
Belgia	7.3	7.1	7.1
Luxemburg	8.3		8.5
		8.2	
Danemarca	9.3		9.3
		9.3	
Irlanda	7.7	8	8

Polonia	5	5.3
Cehia	-	-
Slovacia	-	-
Lituania	4.9	5
Letonia	-	-
Estonia	-	-
Ungaria	-	-
Slovenia	-	-
Malta	5.2	5.6
Cipru	-	-
Franta	-	-
Olanda	-	-
Germania	-	-
	-	-
Marea Britanie	-	-
Italia	-	-
Grecia	-	-
Suedia	-	-
Finlanda	8.9	9.2
Spania	-	-
Portugalia		
	5.8	6
Austria	-	-
Belgia	-	-
Luxemburg		
	8.2	8.5
Danemarca	-	-
Irlanda	-	-

2003	2004	2005	2006	2007	2008	2009	2010
2.8	2.9	3	3.1	3.7	3.8	3.8	3.7
3.1	3.2	3.5	3.8	4.1	4.6	4.4	4.4
3.9	4.1	4	4	4.1	3.6	3.8	3.6
3.6	3.5	3.4	3.7	4.2	4.6	5	5.3
3.9	4.2	4.3	4.8	5.2	5.2	4.9	4.6
3.7	4	4.3	4.7	4.9	5.9	4.5	4.3
4.7	4.6	4.8	4.8	4.8	4.6	4.9	5
3.8	4	4.2	4.7	4.8	5	4.5	4.3
5.5	6	6	6.7	6.5	6.6	6.6	6.5
4.8	4.8	5	5.2	5.3	5.1	5.1	4.7
5.9	6	6.1	6.4	6.6	6.7	6.6	6.4
	6.8	6.6	6.4	5.8	5.8	5.2	5.6
6.1	5.4	5.7	5.6	5.3	6.4	6.6	6.3
6.9	7.1	7.5	7.4	7.3	6.9	6.9	6.8
8.9	8.7	8.6	8.7	9	8.9	8.9	8.8
7.7	8.2	8.2	8		7.9		7.9
				7.8		8	
8.7	8.6	8.6	8.6	8.4	7.7		7.6
						7.7	
5.3	4.8	5	4.9	5.2	4.8	4.3	3.9
4.3	4.3	4.3	4.4	4.6	4.7	3.8	3.5
9.3	9.2	9.2	9.2	9.3	9.3	9.2	9.2
9.7	9.7	9.6	9.6	9.4	9	8.9	9.2
6.9	7.1	7	6.8	6.7	6.5	6.1	6.1
6.6	6.3	6.5	6.6	6.5	6.1		6
						5.8	
8	8.4	8.7	8.6	8.1	8.1	7.9	7.9
7.6	7.5	7.4	7.3	7.1	7.3	7.1	7.1
8.7	8.4	8.5	8.6	8.4	8.3		8.5
						8.2	
9.5	9.5	9.5	9.5	9.4	9.3		9.3
						9.3	
7.5	7.5	7.4	7.4	7.5	7.7	8	8

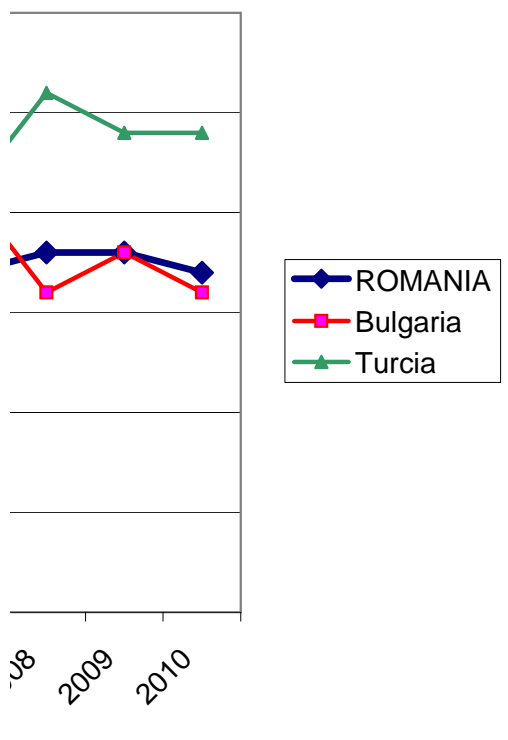
iei:
2010





2003	2004	2005	2006	2007	2008	2009	2010
2.8	2.9	3	3.1	3.7	3.8	3.8	3.7
3.9	4.1	4	4	4.1	3.6	3.8	3.6
3.1	3.2	3.5	3.8	4.1	4.6	4.4	4.4

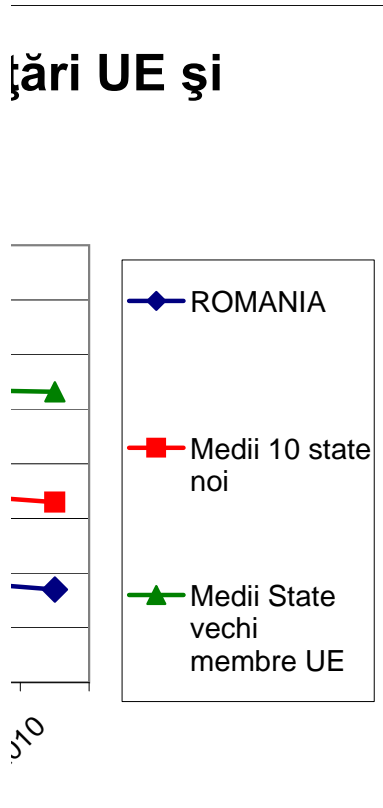
și Turcia



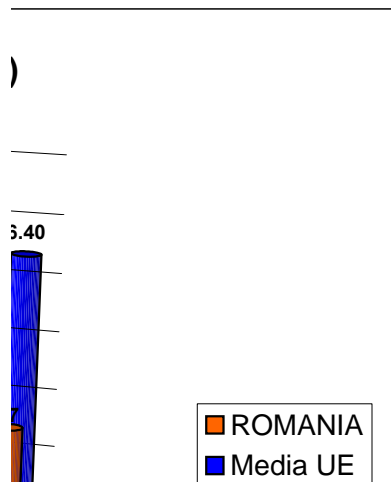
2003	2004	2005	2006	2007	2008	2009	2010
2.8	2.9	3	3.1	3.7	3.8	3.8	3.7
4.67	4.93	5.04	5.3	5.34	5.59	5.39	5.3

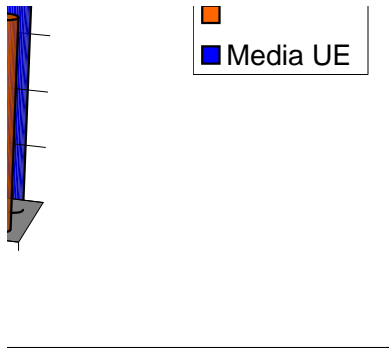
7.81 7.78 7.73

7.71 7.65 7.50 7.34 7.32

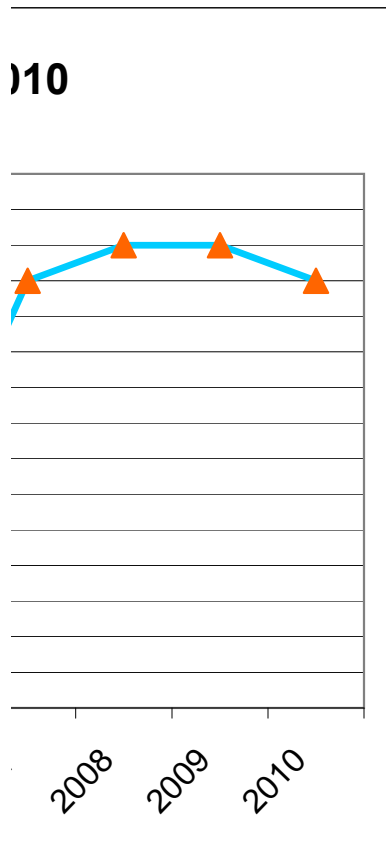


2005	2006	2007	2008	2009	2010
3	3.1	3.7	3.8	3.8	3.7
6.66	6.74	6.62	6.62	6.45	6.40





2005	2006	2007	2008	2009	2010
3	3.1	3.7	3.8	3.8	3.7



scad		constante	
2009	2010	2009	2010
3.8	3.7	-	-
3.8	3.6	-	-
-	-	4.4	4.4

-	-	-	-	-
	4.9	4.6	-	-
	4.5	4.3	-	-
-	-	-	-	-
	4.5	4.3	-	-
	6.6	6.5	-	-
	5.1	4.7	-	-
	6.6	6.4	-	-
-	-	-	-	-
	6.6	6.3	-	-
	6.9	6.8	-	-
	8.9	8.8	-	-
	8	7.9	-	-
	7.7	7.6	-	-
	4.3	3.9	-	-
	3.8	3.5	-	-
-	-	-	9.2	9.2
-	-	-	-	-
-	-	-	6.1	6.1
-	-	-	-	-
-	-	-	7.9	7.9
-	-	-	7.1	7.1
-	-	-	-	-
-	-	-	9.3	9.3
-	-	-	8	8