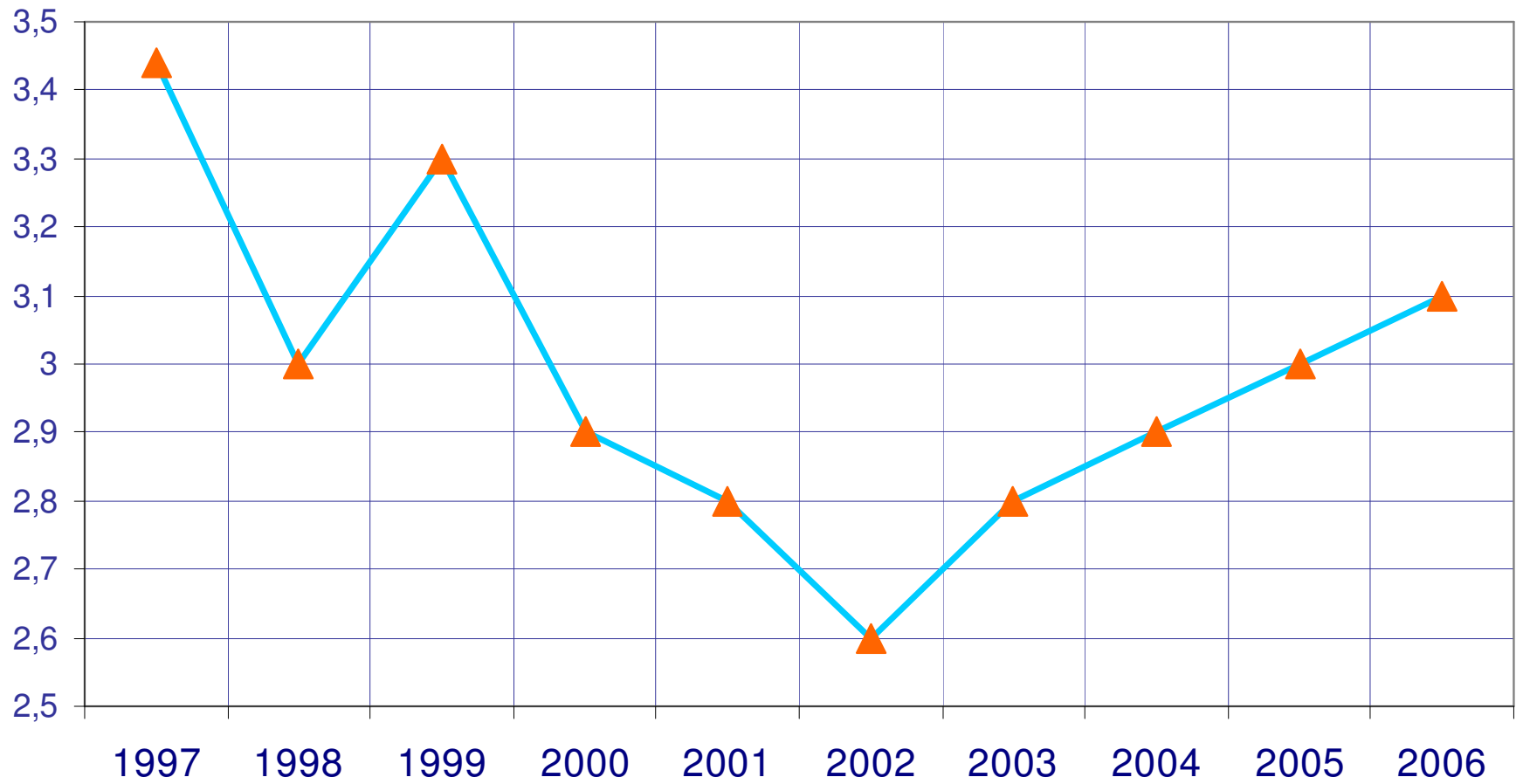


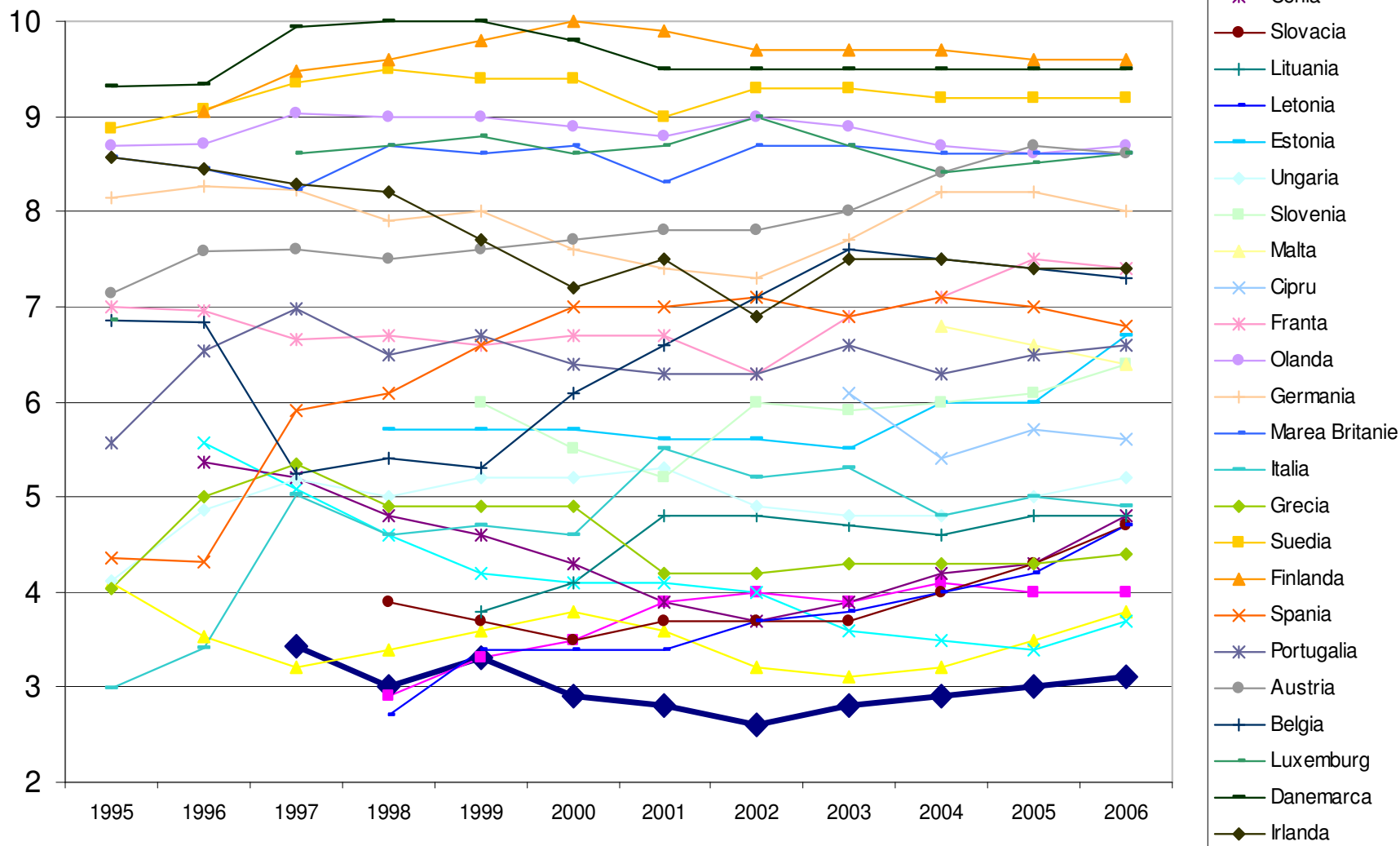
## Indicele de Percepție a Corupției: Evoluția țărilor europene 1995-2006

	1995	1996	1997	1998	1999	2000	2001	2002	2003	2004	2005	2006
<b>ROMANIA</b>	-	-	3.44	3.00	3.30	2.90	2.80	2.60	2.80	2.90	3.00	<b>3,1</b>
Bulgaria	-	-	-	2.90	3.30	3.50	3.90	4.00	3.90	4.10	4.00	4
Turcia	4.10	3.54	3.21	3.40	3.60	3.80	3.60	3.20	3.10	3.20	3.50	3,8
Polonia	-	5.57	5.08	4.60	4.20	4.10	4.10	4.00	3.60	3.50	3.40	3,7
Cehia	-	5.37	5.20	4.80	4.60	4.30	3.90	3.70	3.90	4.20	4.30	4,8
Slovacia	-	-	-	3.90	3.70	3.50	3.70	3.70	3.70	4.00	4.30	4,7
Lituania	-	-	-	-	3.80	4.10	4.80	4.80	4.70	4.60	4.80	4,8
Letonia	-	-	-	2.70	3.40	3.40	3.40	3.70	3.80	4.00	4.20	4,7
Estonia	-	-	-	5.70	5.70	5.70	5.60	5.60	5.50	6.00	6.00	6,7
Ungaria	4.12	4.86	5.18	5.00	5.20	5.20	5.30	4.90	4.80	4.80	5.00	5,2
Slovenia	-	-	-	-	6.00	5.50	5.20	6.00	5.90	6.00	6.10	6,4
Malta	-	-	-	-	-	-	-	-	-	6.80	6.60	6,4
Cipru	-	-	-	-	-	-	-	-	6.10	5.40	5.70	5,6
<b>Medii 10 state noi</b>	<b>4.12</b>	<b>5.27</b>	<b>5.15</b>	<b>4.45</b>	<b>4.58</b>	<b>4.48</b>	<b>4.50</b>	<b>4.55</b>	<b>4.67</b>	<b>4.93</b>	<b>5.04</b>	<b>5,3</b>
Franta	7.00	6.96	6.66	6.70	6.60	6.70	6.70	6.30	6.90	7.10	7.50	7,4
Olanda	8.69	8.71	9.03	9.00	9.00	8.90	8.80	9.00	8.90	8.70	8.60	8,7
Germania	8.14	8.27	8.23	7.90	8.00	7.60	7.40	7.30	7.70	8.20	8.20	8
Marea Britanie	8.57	8.44	8.22	8.70	8.60	8.70	8.30	8.70	8.70	8.60	8.60	8,6
Italia	2.99	3.42	5.03	4.60	4.70	4.60	5.50	5.20	5.30	4.80	5.00	4,9
Grecia	4.04	5.01	5.35	4.90	4.90	4.90	4.20	4.20	4.30	4.30	4.30	4,4
Suedia	8.87	9.08	9.35	9.50	9.40	9.40	9.00	9.30	9.30	9.20	9.20	9,2
Finlanda	-	9.05	9.48	9.60	9.80	10.00	9.90	9.70	9.70	9.70	9.60	9,6
Spania	4.35	4.31	5.90	6.10	6.60	7.00	7.00	7.10	6.90	7.10	7.00	6,8
Portugalia	5.56	6.53	6.97	6.50	6.70	6.40	6.30	6.30	6.60	6.30	6.50	6,6
Austria	7.13	7.59	7.61	7.50	7.60	7.70	7.80	7.80	8.00	8.40	8.70	8,6
Belgia	6.85	6.84	5.25	5.40	5.30	6.10	6.60	7.10	7.60	7.50	7.40	7,3
Luxemburg	6.85	-	8.61	8.70	8.80	8.60	8.70	9.00	8.70	8.40	8.50	8,6
Danemarca	9.32	9.33	9.94	10.00	10.00	9.80	9.50	9.50	9.50	9.50	9.50	9,5
Irlanda	8.57	8.45	8.28	8.20	7.70	7.20	7.50	6.90	7.50	7.50	7.40	7,4
<b>Media State vechi UE</b>	<b>7.05</b>	<b>7.40</b>	<b>7.70</b>	<b>7.68</b>	<b>7.69</b>	<b>7.69</b>	<b>7.64</b>	<b>7.67</b>	<b>7.81</b>	<b>7.78</b>	<b>7.73</b>	<b>7,71</b>
<b>Media UE</b>	<b>6.74</b>	<b>6.93</b>	<b>7.19</b>	<b>6.67</b>	<b>6.53</b>	<b>6.50</b>	<b>6.49</b>	<b>6.51</b>	<b>6.57</b>	<b>6.58</b>	<b>6.66</b>	<b>6,74</b>

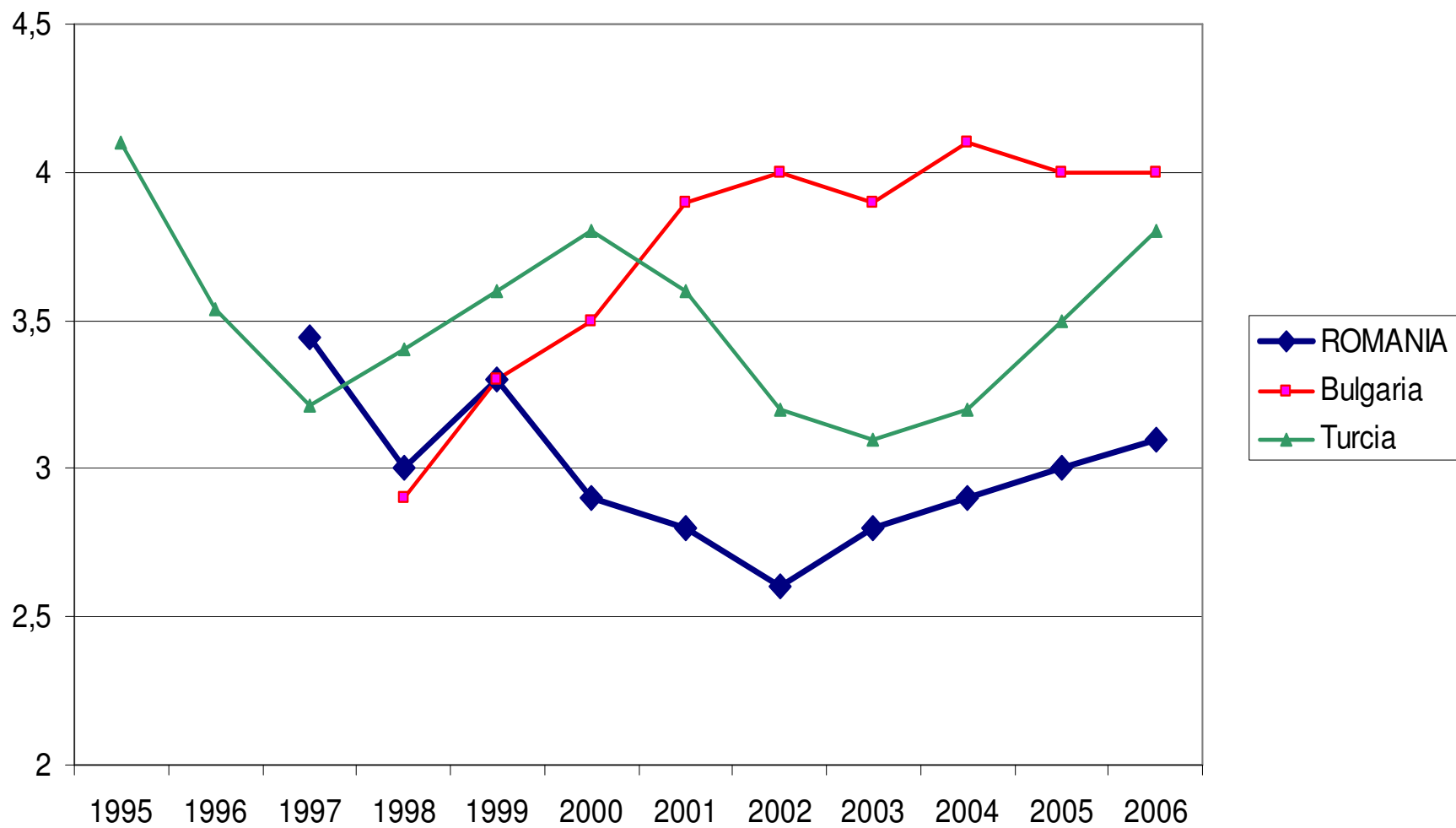
## Evoluția României în perioada 1997-2006



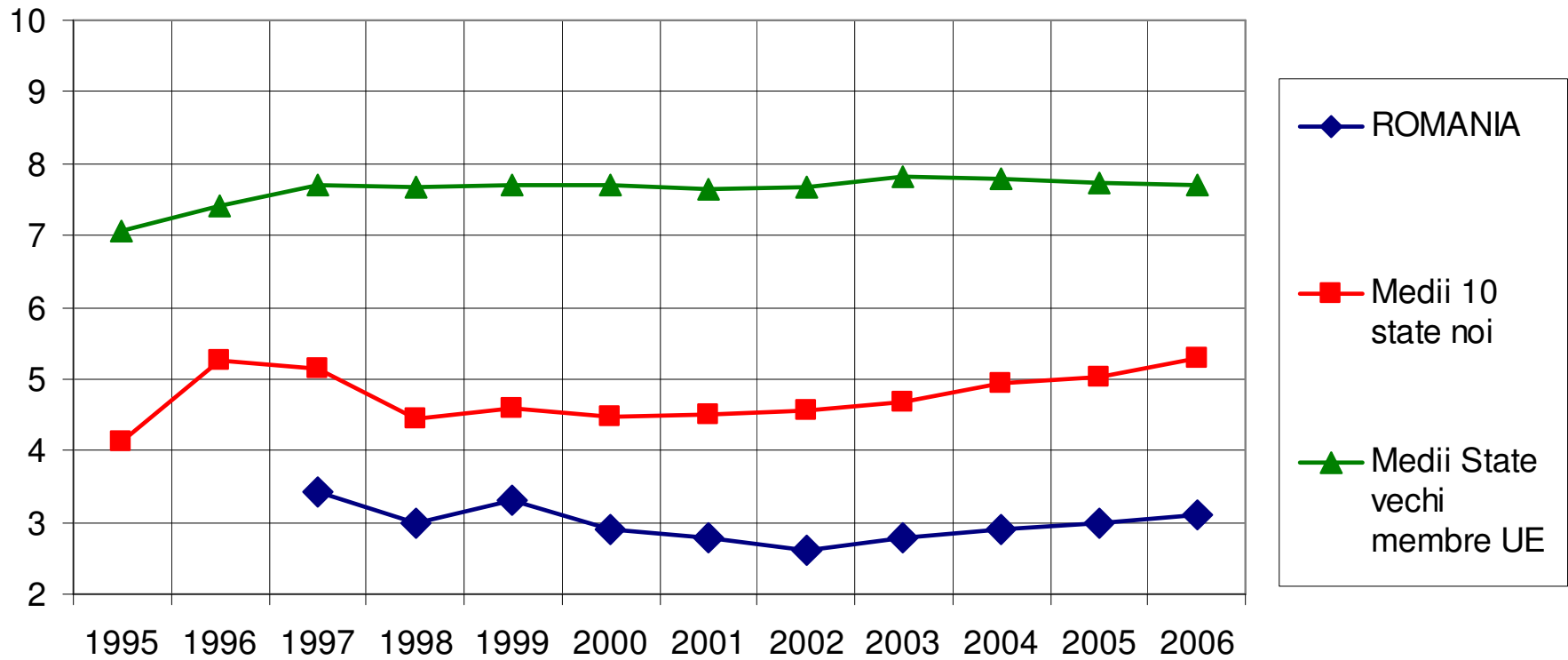
## Indicele de Percepție a Corupției: Evoluția țărilor europene 1995-2006



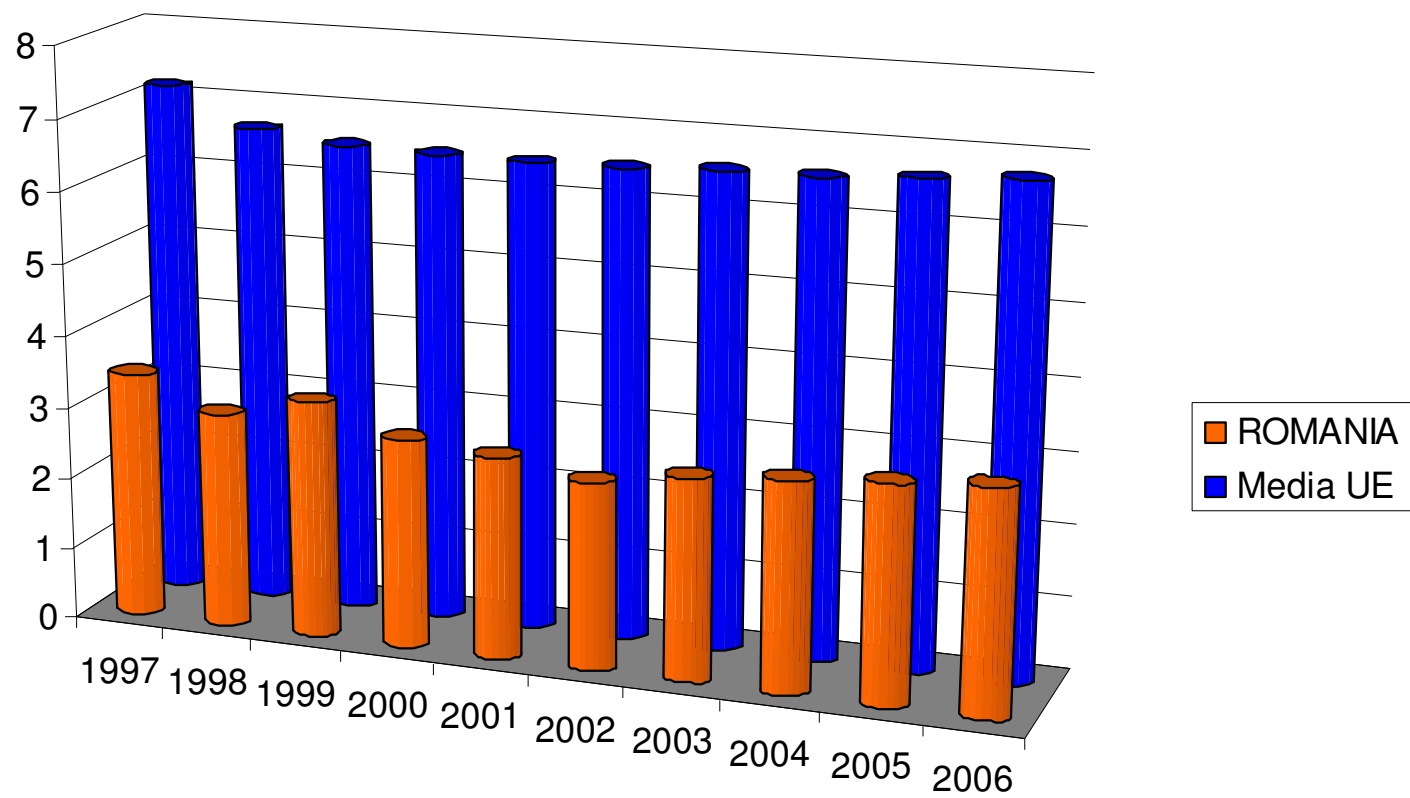
IPC 2006: Țările care vor adera la UE la 1 ianuarie 2007 și Turcia



## IPC 2006: România vs. media vechilor țări UE și media statelor nou aderate



### IPC 2006: România vs. media Uniunii Europene (toate statele)



	1997	1998	1999	2000	2001	2002	2003	2004	2005	2006
ROMÂNIA	3.44	3.0	3.3	2.9	2.8	2.6	2.8	2.9	3.0	3,1
Media UE	7.19	6.67	6.53	6.5	6.49	6.51	6.57	6.58	6.66	6,74